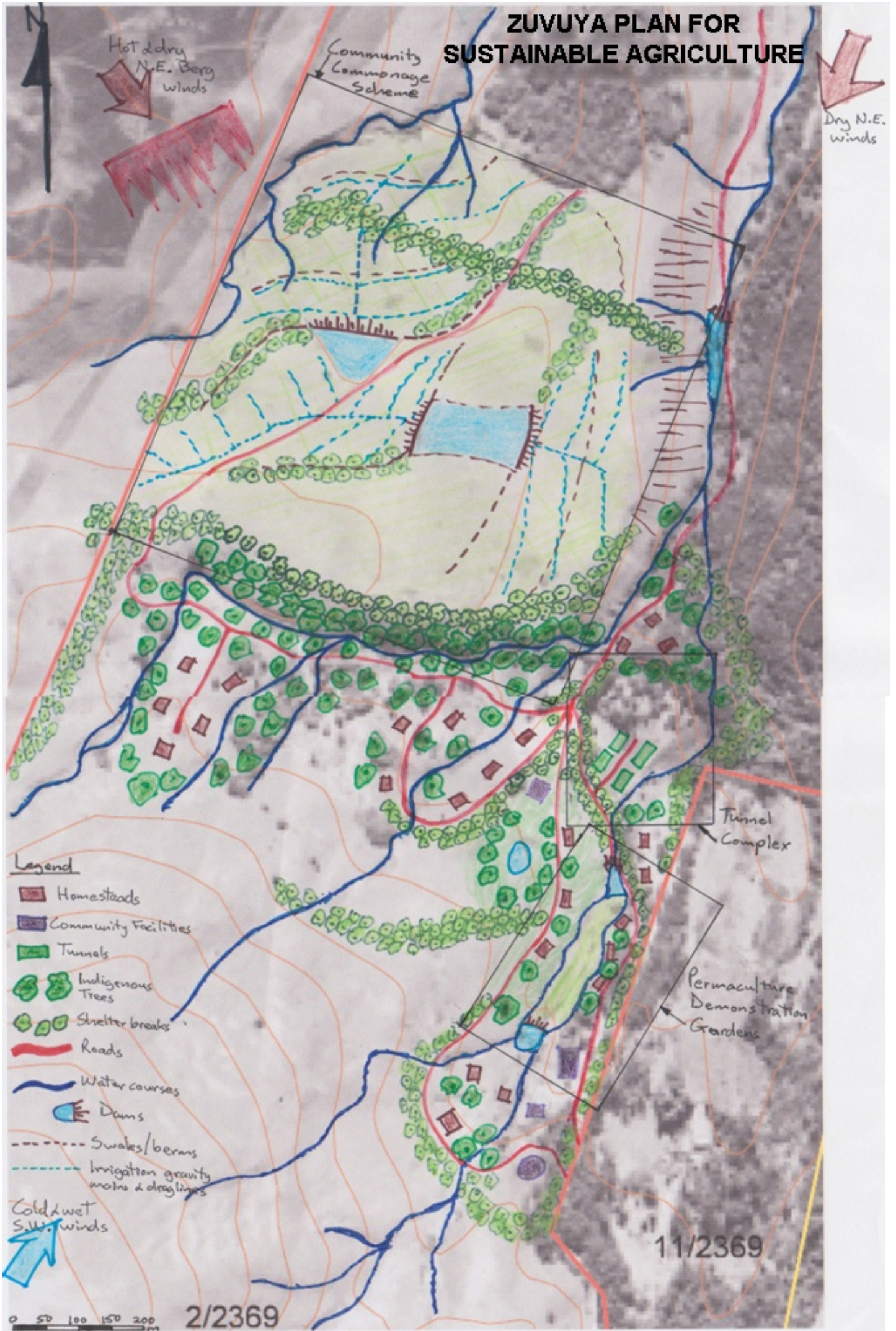


Zuvuya Sustainability Outreach Centre
 Research Logframe for Sustainable Agriculture
 Feasibility Study: Start Date 1 June 2007

Major Activity/Field	Project Name/Initiative	Stakeholders	Scope of Work	Inputs	Outputs	Budgets	Funding	Linkages	Time Frames	Assumptions								
A. Zuvuya Sustainable Agriculture						R 3,146,967	25 Homeowners @ R126,000 each		Farm established after 5 years	That all 25 Homeowners collaborate								
A.1 Zuvuya Farm Planning, Design & Training	A.1.1 Farm Planning and Design	Homeowners of ZVA	Contour mapping (40 hrs)	Engineering survey	Detailed engineered permaculture farm design	R 24,000	25 Homeowners @ R7,000 each	Zuvuya land use plan	First 4 months	That ZVA undertakes a detailed farm design.								
			Integrated farm roads, stormwater & hydrology design (100 hrs)	Engineering design		R 70,000												
			Farm layout design (40 hrs)	Permaculture design		R 28,000												
			Site survey layout (40 hrs)	Engineering survey		R 24,000												
			Project Management (40 hrs)	Project manager		R 28,000												
	Sub-Total						R 174,000											
	A.1.2 Community skills training in sustainable lifestyles	Homeowners of ZVA	Permaculture Design Course (80 hrs)	Permaculture facilitator	25 Homeowners trained in sustainable lifestyles	R 48,000	25 Homeowners @ R7,700 each	Zuvuya land use plan	First 12 months	That ZVA undertake sustainability training courses.								
			Ecovillage Training Course (160 hrs)	Ecovillage facilitator		R 96,000												
			Natural Building Course (40 hrs)	Architect		R 24,000												
			Alternative Energy Course (40 hrs)	Energy specialist		R 24,000												
Sub-Total						R 192,000												
A.1.3 Financial Modeling	Homeowners of ZVA	Preliminary financial model at concept design (40 hrs)	Project manager / business planner	Financial model	R 24,000	25 Homeowners @ R2,000 each	Zuvuya land use plan	By end-September 2007 Dependent on A.1.1	That ZVA engage with the financial model									
		Updated financial model at detailed design (40 hrs)			R 24,000													
		Sub-Total								R 48,000								
A.2 Zuvuya Farm Establishment	A.2.1 25 Homestead Gardens for domestic food security	Homeowners of ZVA	Small vegetable garden	Homeowners' resources	25 Viable homestead gardens established that supply fresh herbs, vegetables and eggs for daily consumption.	R 1,000	25 Homeowners @ R5,000 each	Zuvuya land use plan	One year after establishment of each homestead.	That homeowners demonstrate homestead sustainability principles for food security.								
			Chicken tractor			R 500												
			Grey water recycling			R 500												
			Rainwater tanks			R 1,500												
			Rainwater harvesting			R 500												
			Fencing			R 1,000												
	Cost each						R 5,000											
	Sub-Total						R 125,000											
	A.2.2 Permaculture Commonage Garden for food security and demonstration gardens	Homeowners of ZVA	As per Paul Dunkin's report				R 200,000	25 Homeowners @ R8,000 each	Zuvuya land use plan	3 years after establishment of each homestead.	That ZVA share costs and collaborate on this initiative							
			Sub-Total						R 200,000									
	A.2.3 Community Commonage Scheme of 48 ha for long term food security and cash income	Homeowners of ZVA	Keyline dams (40,000 m3)	Homeowners of ZVA with bank loan finance.	A sustainable community commonage scheme of 48 ha producing some 200 tons pa of grains & vegetables for community consumption and sales of surplus.	R 466,667	Homeowners of ZVA with bank loan finance @ R49,000 each or R26,000/ha	Zuvuya land use plan	3 years after establishment of each homestead.	That ZVA invest resources to develop the community commonage scheme for long term food security and cash income from surplus production.								
			Keyline berms and swales (3,000 m)			R 75,000												
			Land preparation & ridging system (net 36 ha)			R 28,800												
			Fencing (repairs)			R 20,000												
			Irrigation gravity mains (800 m of draglines)			R 96,000												
Dragline drip irrigation system (3,700 m of draglines)			R 166,500															
Seedlings and soil preparation (net 36 ha)			R 360,000															
Sub-Total						R 1,212,967												
A.2.4 Tree planting to increase biomass	Homeowners of ZVA	Tree shelter breaks (6,500 m or 4,300 trees)	Homeowners of ZVA with bank loan finance.	6,000 trees planted	R 516,000	Homeowners of ZVA with bank loan finance @ R30,000 each	Zuvuya land use plan	Trees planted during first 4 years with canopies maturing after 15 to 20 years.	That ZVA invest resources to plant trees.									
		Indigenous trees (3,500 m or 700 trees)			R 105,000													
		Fruit and nut orchards (3,000 m or 1,000 trees)			R 120,000													
		Sub-Total								R 741,000								
A.2.5 Tunnels and Nursery	Homeowners of ZVA	Vegetable tunnels (x2)	Homeowners of ZVA with bank loan finance.	Intensive vegetable producing area established to provide a wide range of food security	R 80,000	Homeowners of ZVA with bank loan finance @ R19,000 each	Zuvuya land use plan	Tunnels and nursery established after 4 years.	That ZVA invest resources for a wider range of food security products.									
		Nursery tunnel (x2)			R 80,000													
		Frame structure (2,500 m2)			R 60,000													
		Shade / hail protection netting (2,500 m2)			R 75,000													
		Fencing (600m)			R 30,000													
		Irrigation system			R 50,000													
		Composting wind rows			R 5,000													
		Recycling centre			R 2,000													
		Office, storeroom & sheds (40 m2)			R 32,000													
		Storage bins (20 m2)			R 30,000													
		Initial seed stock			R 10,000													
		Sub-Total								R 454,000								

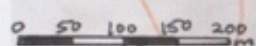
ZUVUYA PLAN FOR SUSTAINABLE AGRICULTURE



- Legend**
- Homesteads
 - Community Facilities
 - Tunnels
 - Indigenous Trees
 - Shelter breaks
 - Roads
 - Water courses
 - Dams
 - Swales/berms
 - Irrigation gravity mains & draglines

Cold & wet S.W. winds

11/2369



2/2369



- Recycling
- Shelter belt trees
- Fruit trees
- Pecan trees
- Indigenous trees
- Tunnels
- Office, shed & storage
- Compost windrows

Zuruya
Tunnels & nursery
layout

